



Users Already Using a DI Series Camera with Nikon View

Windows 98 Second Edition (SE), Windows Millennium Edition (Me), Windows 2000 Professional

If you are already using a DI Series camera with Nikon View, select the manual for your operating system from the list below.

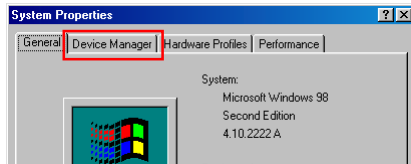
- [✦ Windows 98SE – Page d1-d3](#)
- [✦ Windows Me – Page d4-d5](#)
- [✦ Windows 2000 Professional – Page d6-d8](#)

For Users Already Using a D1 Series Camera with Nikon View

Your camera is already registered with Windows, but the camera drivers need to be renewed.

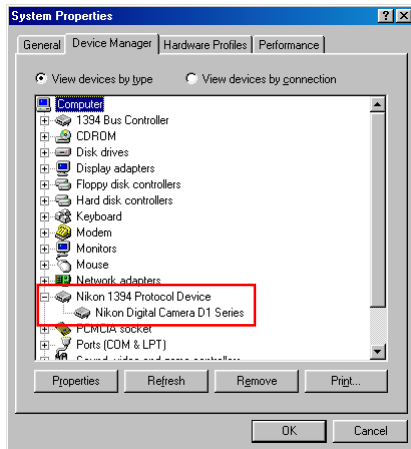
Step 1

Click the My Computer icon on the desktop with the right mouse button and select Properties from the menu that appears. The System Properties dialog will be displayed; click the Device Manager tab.



Step 2

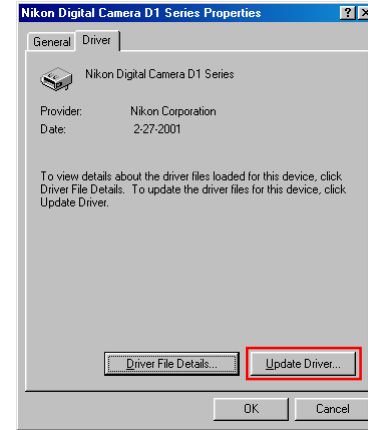
The Device Manager sheet will be displayed. Confirming that “Nikon Digital Camera D1 Series” is listed under “Nikon 1394 Protocol Device” and double click the listing to open the Properties window.



Windows 98 Second Edition (SE)

Step 3

The Nikon D1 Series Properties dialog will be displayed. Open the Driver tab and click **Update Driver...**



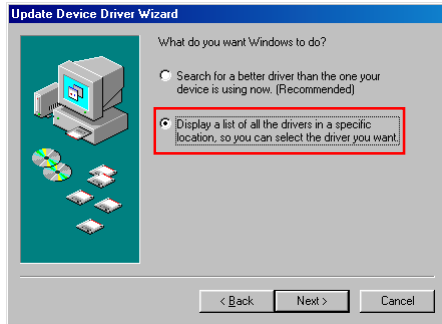
Step 4

The Windows update device driver wizard will be displayed; click **Next**.



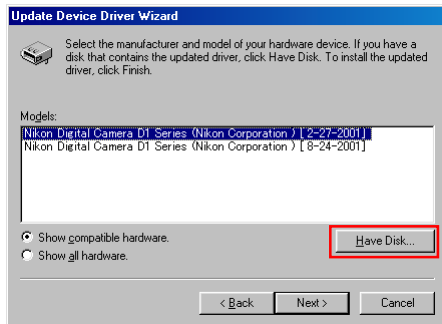
Step 5

The dialog shown below will be displayed. Select “Display a list of all the drivers in a specific location, so you can select the driver you want.” and click **Next**.



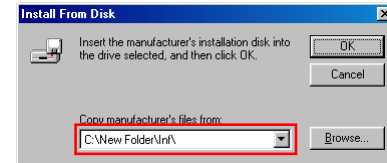
Step 6

The dialog shown below will be displayed. Click the **Have Disk ...** button.



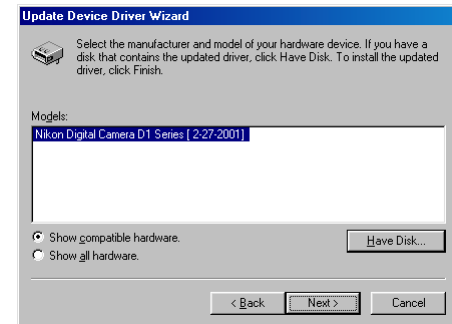
Step 7

The Install From Disk dialog will be displayed. If the downloaded folder is labelled “New Folder”, select “C:\New Folder\Inf” in the Copy Distributed Files From ... text box. Click **OK**.



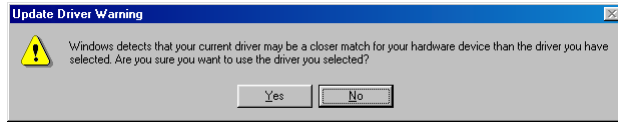
Step 8

The dialog shown below will be displayed; click **Next**.



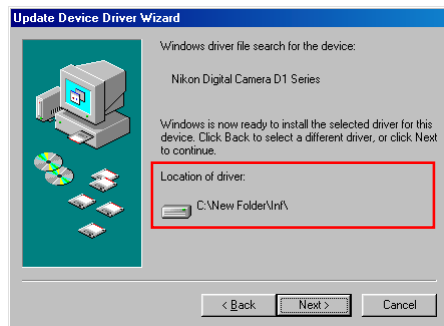
Step 9

A warning message will be displayed, confirming whether you want to renew the drivers will be renewed. Click **Yes**.



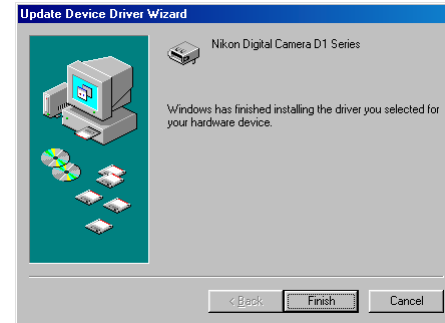
Step 10

The Windows Update Device Driver Wizard will be displayed. Confirm that the driver location is “C:\New Folder\Inf” and click **Next**.



Step 11

When the driver installation has been completed, the dialog shown below will be displayed; click **Finish** to close the wizard.



Restart your computer if a message appears directing you to do so.

Troubleshooting

- If “1394 Bus Controller” is not displayed in the Device Manager, if the IEEE 1394 board or card is listed under “Other Devices” or “Miscellaneous Devices,” or if the listing for the IEEE 1394 board or card is preceded by a red or yellow warning icon...

...the computer does not recognize the IEEE 1394 board or card. Refer to the documentation provided with your computer or IEEE 1394 board or card for information on registering the board or card with the system.

- If “1394 Bus Controller” is listed in the Device Manager but the entry for the Nikon D1 (D1x/D1H) does not appear...

...check the following:

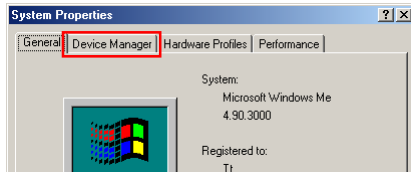
- Is the camera on?
- Is the battery fully charged? If you are using an AC adapter (available separately), is it properly connected?
- Is the mode dial set to “PC”?
- Is the IEEE 1394 cable properly connected?

For Users Already Using a D1 Series Camera with Nikon View

Your camera is already registered with Windows, but the camera drivers need to be renewed.

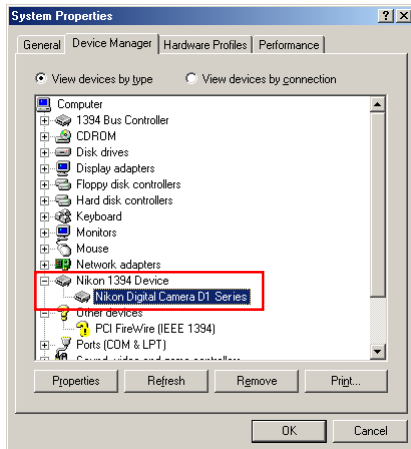
Step 1

Click the My Computer icon on the desktop with the right mouse button and select Properties from the menu that appears. The System Properties dialog will be displayed; click the Device Manager tab.



Step 2

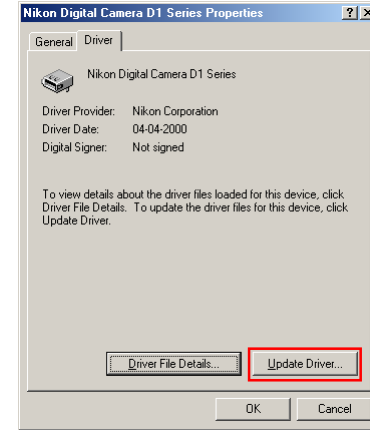
The Device Manager sheet will be displayed. Confirming that “Nikon Digital Camera D1 Series” is listed under “Nikon 1394 Protocol Device” and double click the listing to open the Properties window.



Windows Millennium Edition (ME)

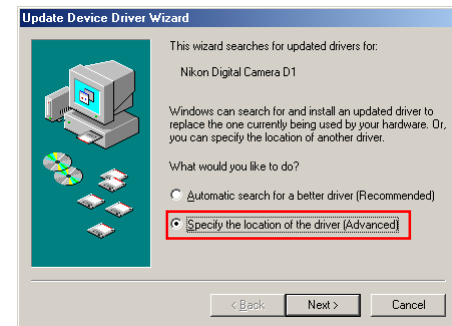
Step 3

The Nikon Digital Camera D1 Series Properties dialog will be displayed. Open the Driver tab and click **Update Driver...**



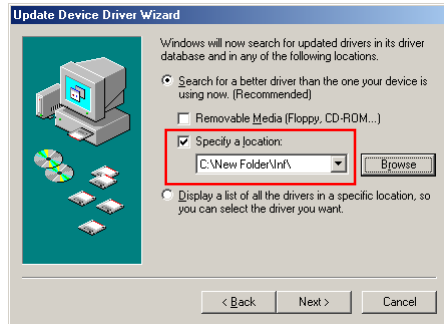
Step 4

The Windows update device driver wizard will be displayed. Select “Specify the location of the driver” and click **Next**.



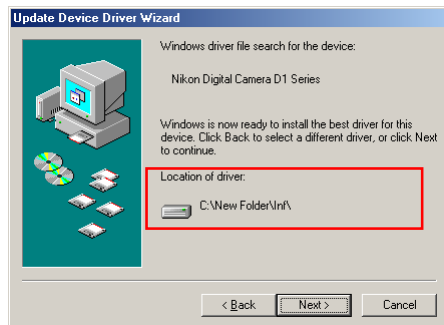
Step 5

The dialog shown below will be displayed. Select “Search for a better driver than the one your device is using now.(Recommended)”, check “Specify a location”. If the downloaded folder is labelled “New Folder”, select “C:\New Folder\Inf” and click **Next**.



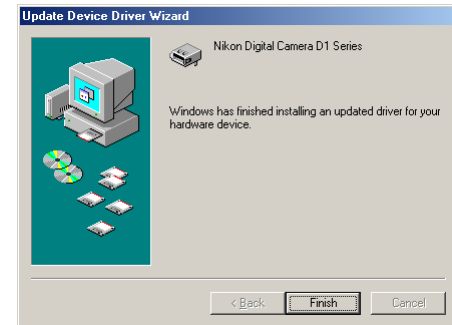
Step 6

The dialog shown below will be displayed. Confirm that the driver location is “C:\New Folder\Inf”, and click **Next**.



Step 7

When the driver installation has been completed, the dialog shown below will be displayed; click **Finish** to close the wizard.



Troubleshooting

- If “1394 Bus Controller” is not displayed in the Device Manager, if the IEEE 1394 board or card is listed under “Other Devices” or “Miscellaneous Devices,” or if the listing for the IEEE 1394 board or card is preceded by a red or yellow warning icon...

...the computer does not recognize the IEEE 1394 board or card. Refer to the documentation provided with your computer or IEEE 1394 board or card for information on registering the board or card with the system.

- If “1394 Bus Controller” is listed in the Device Manager but the entry for the Nikon D1 (D1x/D1H) does not appear...

...check the following:

- Is the camera on?
- Is the battery fully charged? If you are using an AC adapter (available separately), is it properly connected?
- Is the mode dial set to “PC”?
- Is the IEEE 1394 cable properly connected?

For Users Already Using a D1 Series Camera with Nikon View

Windows 2000 Professional

Your camera is already registered with Windows, but the camera drivers need to be renewed.

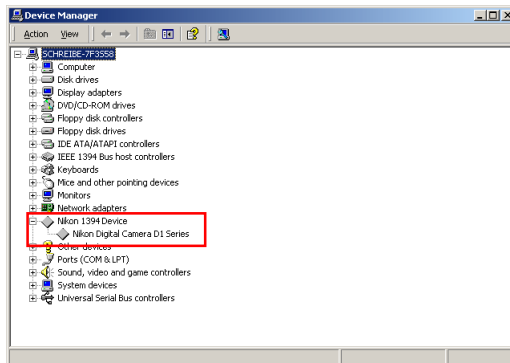
Step 1

Click the My Computer icon on the desktop with the right mouse button and select Properties from the menu that appears. The System Properties dialog will be displayed; click the Device Manager tab.



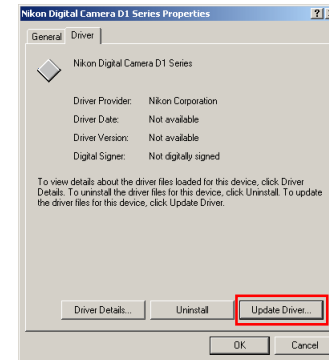
Step 2

The Device Manager sheet will be displayed. Confirming that “Nikon Digital Camera D1 Series” is listed under “Nikon I394 Protocol Device” and double click the listing to open the Properties window.



Step 3

The Nikon Digital Camera D1 Series Properties dialog will be displayed. Open the Driver tab and click **Update Driver...**



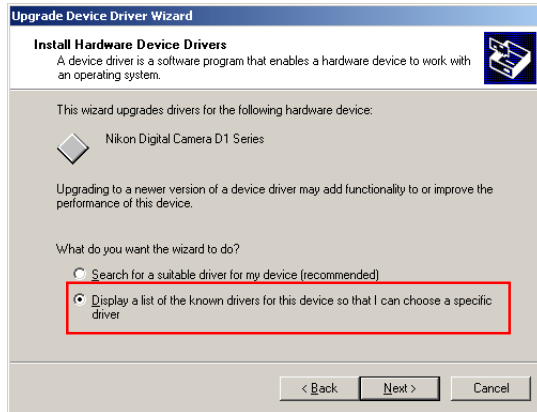
Step 4

The Windows update device driver wizard will be displayed; click **Next**.



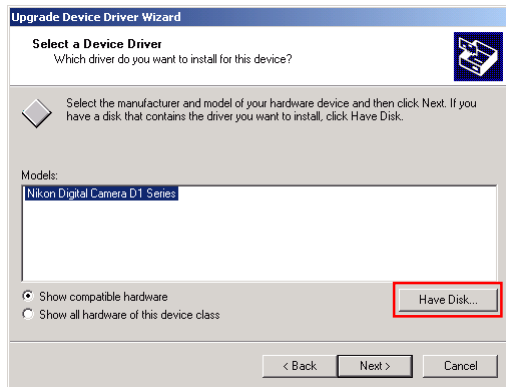
Step 5

The dialog shown below will be displayed. Select “Display a list of the known drivers for this device so that can choose a specific driver” and click **Next**.



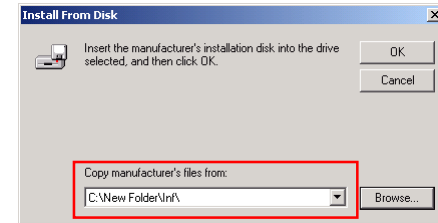
Step 6

The dialog shown below will be displayed. Click the **Have Disk ...** button.



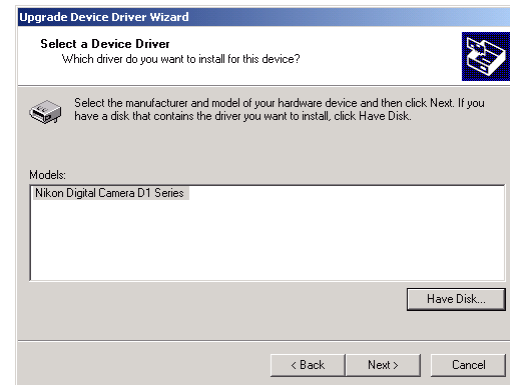
Step 7

The Install From Disk dialog will be displayed. If the downloaded folder is labelled “New Folder”, select “C:\New Folder\Inf” in the Copy manufacturer’s files from text box. Click **OK**.



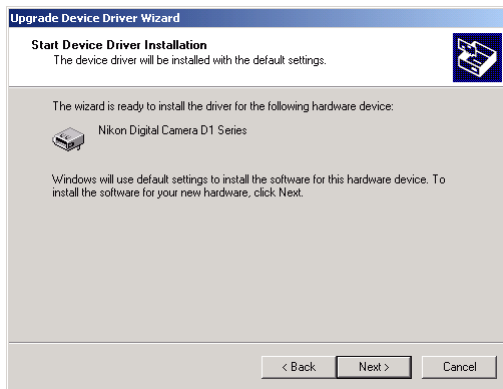
Step 8

The dialog shown below will be displayed; click **Next**.



Step 10

The Windows Update Device Driver Wizard will be displayed. Click **Next**.



Step 11

When the driver installation has been completed, the dialog shown below will be displayed; click **Finish** to close the wizard.



Restart your computer if a message appears directing you to do so.

Troubleshooting

- If “1394 Bus Controller” is not displayed in the Device Manager, if the IEEE 1394 board or card is listed under “Other Devices” or “Miscellaneous Devices,” or if the listing for the IEEE 1394 board or card is preceded by a red or yellow warning icon...

...the computer does not recognize the IEEE 1394 board or card. Refer to the documentation provided with your computer or IEEE 1394 board or card for information on registering the board or card with the system.

- If “1394 Bus Controller” is listed in the Device Manager but the entry for the Nikon D1 (D1x/D1h) does not appear...

...check the following:

- Is the camera on?
- Is the battery fully charged? If you are using an AC adapter (available separately), is it properly connected?
- Is the mode dial set to “PC”?
- Is the IEEE 1394 cable properly connected?